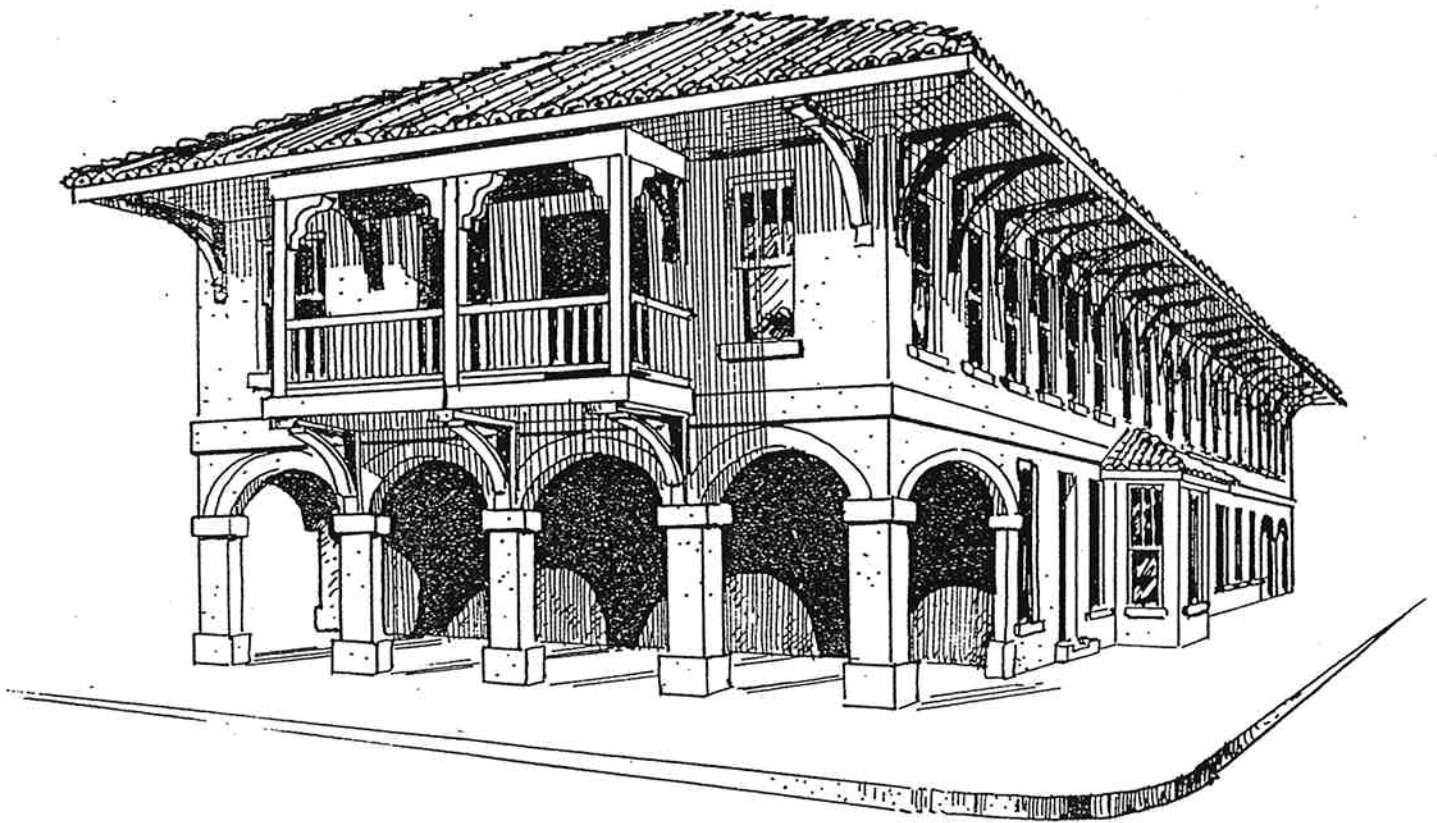


DESIGN GUIDELINES MANUAL
for the
BOCA GRANDE
HISTORIC DISTRICT IN LEE COUNTY, FLORIDA
Rehabilitation of Historic Buildings,
New Construction and
Remodeling of Non-Historic Buildings
June, 1993



This document is designed to provide information regarding the subject matter covered. It is distributed to the general public with the understanding that neither Lee County Government nor James F. Soller, Architect is rendering professional services to any person or corporation. If professional assistance is required or the reader has any questions relating to the subject matter, the reader should solicit qualified professional aid.

This project has been financed in part with historic preservation grant assistance provided by the National Park Service, U.S. Department of the Interior, administrated through the Bureau of Historic Preservation, Florida, Department of State, assisted by the Historic Preservation Advisory Council. However, the contents and opinions do not necessarily reflect the views and opinions of the Department of the Interior or the Florida Department of State, nor does the mention of trade names or commercial products constitute endorsement or recommendation by the Department of State. This program receives Federal financial assistance for identification and protection of historic properties. Under Title IV of the Civil Rights Act of 1964 and Section 504 of the Rehabilitation Act of 1973, the U.S. Department of the Interior prohibits discrimination on the basis of race, color, national origin, or handicap in its federally assisted programs. If you believe you have been discriminated against in any program, activity, or facility as described above, or if you desire further information, please write to: Office for Equal Opportunity, U.S. Department of the Interior, Washington, D.C. 20240.

DESIGN GUIDELINES MANUAL
for the
BOCA GRANDE
HISTORIC DISTRICT IN LEE COUNTY, FLORIDA
Rehabilitation of Historic Buildings,
New Construction and
Remodeling of Non-Historic Buildings
June, 1993

Written by:
JAMES F. SOLLER, ARCHITECT
202 West Miami Avenue
Venice, FL 34285

Documentation and Research by:
Douglas Driscoll and Francesca Moran Fiore

Illustration and Artwork by:
Randy N. Davis and Robert Soller

Edited by:
Lee County Planning Division
Paul O'Connor, Acting Planning Director
Gloria M. Sajgo, Principal Planner
Gladys Cook, Senior Planner
Annette Snapp, Senior Planner
Karen Hutcherson, Secretary

ACKNOWLEDGEMENTS

LEE COUNTY BOARD OF COUNTY COMMISSIONERS

John Manning, District No. 1
Douglas St. Cerny, District No. 2
Ray Judah, District No. 3
Frank Mann, District No. 4
John Albion, District No. 5

LEE COUNTY HISTORIC PRESERVATION BOARD

Annette Guilfoyle, Chair
Linda Sickler Robinson, Vice Chair
Eugene (Chuck) Schmitt
Toni Ferrell
Creighton Sherman
Ernest Hall
Chauncey Goss

National Parks Service, U.S. Department of Interior
Bureau of Historic Preservation, Florida Department of State

Lee County Historic Preservation Board
c/o Lee County Planning Division
P.O. Box 398
Fort Myers, FL 33902-0398
Telephone: (813) 339-6200 Facsimile: (813) 339-6202

TABLE OF CONTENTS

List of Illustrations	i
Introduction	1
Chapter 1 - Overview of the Boca Grande Historic District	
Procedures of the Lee County Historic Preservation Program	3
A Brief History of Boca Grande's Development and Influences on its Architecture	5
Historic Architectural Styles of the Community	9
Residential Architecture	11
Frame Vernacular	14
Colonial Revival	16
Bungalow	18
Bungalow Type I	19
Bungalow Type II	19
Bungalow Type III	20
Bungalow Type IV	20
Mediterranean Revival	22
Mission	24
Commercial Architecture	26
Commercial Vernacular	26
Commercial Art Deco	28
Commercial Mediterranean Revival	29
Institutional	30
Chapter 2 - Rehabilitation of Historic Buildings	
The Rehabilitation Philosophy	31
The U.S. Secretary of the Interior's Standards for Rehabilitation	32
Maintaining Original Building Characteristics	33
A Word on Color	35
Roofs and Roofing	36
Complexity of Form	36
Form	36
Materials	36
Color	37
Skylights	37
Dormers	37
Walls	38
Stucco	38
Wood Siding	39

Doors	40
Type	40
Size	40
Frame	40
Decorations and Trim	40
Hardware	40
Windows	42
Type	42
Size	42
Number	42
Material	42
Shutters	43
Awnings	44
Canopies	44
Hurricane Shutters	44
Security Systems	44
Porches and Porte Cocheres	45
Porch Supports and Exposed Structural Supports	47
Woodwork and Other Ornamentation	48
Fences and Walls	49
Light Fixtures	50
Signs	51
Type	51
Number	51
Size	51
Illumination	51
Modern Equipment	52
Air Conditioners	52
Solar Collectors	52
Antennas and Satellite Dishes	52
Swimming Pools and Spas	52
Dumpsters	52
Storefronts	53
Safety and Accessibility	54
Fire Stairs	54
Ramps	54
Site Planning and Landscaping	55
Detached Garages and Outbuildings	55
Archaeological Sites	56

Chapter 3 - New Construction and Remodelling Non-Historic Buildings	
Guidelines for New Construction and Additions to Existing Non-Contributing Buildings in the Boca Grande Historic District	57