

FLEET FOCUS

A newsletter from Lee County Fleet Management

2955 Van Buren Street, Fort Myers, FL 33916

Phone: 239/338-3233



HOLIDAY MEMORIES

The holiday season seems to be the time of the year when we reflect on the past year, what we've accomplished and the people we've met. Some people remember their childhood holidays with fondness and warmth. Others prefer to forget them. I'm one of the people who has great memories of Christmases past. I grew up in a loving home with parents who genuinely cared about me. For that I am truly grateful. In spite of this, I remember one Christmas when I desperately wanted a pair of go-go boots (OK I'm dating my self a bit). Mom and Dad just couldn't afford them and the boots never came. (I'm sure a therapist somewhere would have a field day with this.) I was truly disappointed, but I coped.

Mom always told us where she "hid" the presents. She said it was up to us if we wanted to snoop and ruin our Christmas. One year the temptation was just too great and I looked through all the unwrapped gifts in my parent's closet. That year Christmas was no fun. I knew what I was getting. I knew what everyone was getting. The anticipation and element of surprise were gone.

In spite of my lack of go-go boots, I remember cookies baking, decorating trees, grandparents coming over, and being kept awake by the sound of reindeer hooves on the roof. (Reindeer really did come to MY house.) As adults, we often get stressed from un-mailed cards and un-baked cookies and we forget what the holidays are all about. As we enter this holiday season, whether it's Christmas, Chanukah, or Kwanzai, let us reflect on the good memories of seasons gone by, be thankful for what we have, and work to make memories for the years to come. Happy Holidays from all of us at Fleet Management!!

QUOTABLE QUOTES FOR THE HOLIDAYS

I stopped believing in Santa Claus when my mother took me to see him in a department store, and he asked for my autograph.

- Shirley Temple
Actress

No matter how large you cut the wrapping paper, it will be too small to cover the box.

- Murphy's Corollary

Then the Grinch thought of something, he hadn't before. What if Christmas, he thought, doesn't come from a store? What if Christmas, perhaps, means a little bit more?

- Theodor (Dr. Seuss) Geisel
American Author

If there is no joyous way to give a festive gift, give love anyway.

There's nothing sadder in this world than to awake Christmas morning and not be a child.

Erma Bombeck
Author

The TV news people keep saying this could be the greatest Christmas we ever had. I kind of thought the first

- Unknown

one was.

- Milton Berle
comedian

DO I REALLY NEED TO KNOW THIS?

** On December 24, 1931 construction workers at the future site of Rockefeller Center, dragged in a 12-foot Christmas tree and decorated it with tin cans and paper. The first official Rockefeller Center tree, with 700 blue and white lights, appeared two years later.

** The Nutcracker is believed to be the most frequently staged ballet in history and is usually performed near Christmas.

** Louis Prang created the first American Christmas cards at his Boston factory in 1874.

** American families send and receive an average of 28 Christmas cards each.

** According to the Greeting Card Association, an estimated 2.1 billion paper Christmas cards will crisscross the country

** The dreidel, a four-sided top with the Hebrew letters "nun," "gimel," "hey" and "shin," is spun by family members to determine how many nuts, raisins, tokens, or chips are won based on the value assigned to each letter. Nun is nothing, gimel is all, hey is half, and shin requires the

player to add a token into the pot.

** The Menorah is an important part of the Hannukah celebration. It is a candleholder with eight candles and a shamash or servant candle. One candle is lit by the shamash each night of Hannukah.

** The common abbreviation for Christmas to Xmas is derived from the Greek alphabet. X is letter Chi, which is the first letter of Christ's name in the Greek alphabet.

** Oliver Cromwell banned Christmas Carols and parties between 1649 and 1660 in England. He thought Christmas should be a very solemn day. The only celebration was a sermon and a prayer service.

** In 1836, Alabama was the first state to declare Christmas a legal holiday.

** At midnight on Christmas Eve 1914 (WWI) firing from the German trenches stopped. A German brass band began playing Christmas carols. Early Christmas morning, the German soldiers came out of their trenches, approaching the allied lines, calling "Merry Christmas." At first the allied soldiers thought it was a trick, but they soon climbed out of their trenches and shook hands

with the German soldiers. The truce lasted a few days, and the men exchanged presents of cigarettes and plum puddings, and sang carols and songs. They even played a game of Soccer.

** The actual gift givers are different in various countries:

Spain and South America:

The Three Kings

Italy: La Befana

England: Father Christmas

France: Pere Noel (Father Christmas)

Russia: In some parts - Babouschka (a grandmotherly figure) Other parts - Grandfather Frost.

Germany: Christkind (an angelic messenger from Jesus) She is a beautiful fair haired girl with a shining crown of candles.

Scandinavia: a variety of Christmas gnomes. One is called Julenisse.

Holland: St. Nicholas.

** Christmas trees have been sold commercially in the U.S. since about 1850.

** The best selling trees are Scotch pine, Douglas fir, Noble fir, Fraser fir, Virginia pine, Balsam fir and white pine.

** In the U.S., there are more than 21,000 Christmas tree growers.

** In 1979, the National Christmas Tree was not lighted except for the top ornament, in honor of the

American hostages in Iran.

** In 1963, the National Christmas Tree was not lighted until December 22nd because of a national 30-day period of mourning following the assassination of President Kennedy.

** Every year since 1947, the people of Oslo, Norway have given a Christmas tree to the city of Westminster, England as an expression of gratitude for Britain's help to Norway during WWII.



LAST MONTH'S TRIVIA

What color slippers did Dorothy wear in the *original* Wizard of Oz story by L. Frank Baum?

- Royal Blue
- Ruby Red
- Silver
- Green

The Correct answer is "C" Silver. The color was changed to Ruby Red in the 1939 film because silver didn't look good on the yellow brick road that Dorothy and her friends traveled. Adecia Adams from Library Administration was this month's prize winner.



FAMOUS PEOPLE BORN IN DECEMBER

| | |
|----------------------|----------------|
| Bette Midler | 12/01 |
| Walt Disney | 12/05 |
| Raul Cortes | 12/09 |
| Jermaine Jackson | 12/11 |
| Patrick Lynch | 12/14 |
| Brad Pitt | 12/18 |
| Ray Romano | 12/21 |
| Humphrey Bogart | 12/25 |
| Marty | Ohlfest |
| 12/28 | |
| Ray Nicchia | 12/31 |

THIS MONTH'S TRIVIA

When it comes to the kings of England, what name has been used the most?

- Charles
- Edward
- Phillip
- Arthur

Send your guess to Marilyn Rawlings at Fleet Management to be eligible to win a prize. Remember, if no one gets it right, everyone who enters wins something!!!



SILENT NIGHT???

Silent Night was written in 1818, by an Austrian

priest Joseph Mohr. He was told the day before Christmas that the church organ was broken and would not be repaired in time for Christmas Eve. He was saddened by this and could not think of Christmas without music, so he wanted to write a carol that could be sung by choir to guitar music. He sat down and wrote three stanzas. Later that night the people in the little Austrian Church sang "Stille Nacht" for the first time.



CAN YOU SPARE A CAN OF SOUP???

Fleet Management is once again running its annual food drive to help a local food pantry stock its shelves. We are asking our customers to help us out by bringing their canned goods (soups, veggies, baked beans, pie filling) or non-perishable food items (rice, pasta, cake mixes) to the Fleet Management service desk or the rear parts counter during the first three weeks of December. We are also requesting diapers of any size and personal care items (toothpaste, dental floss,

toothbrushes, etc.) If you are wondering what to bring, simply think of your favorite holiday recipes and bring in some of the ingredients. Thank you in advance for your help with this worthwhile project.

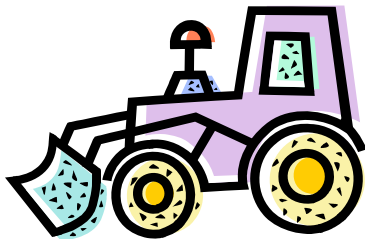
KUDOS TO FLEET!!!

Andy,

Many thanks to you and your mechanics for the fast turn around on removing and installing the arrow board and performing the "A" service on 49094. It looks very good and the crew is very happy.

James Fencil
DOT/Traffic

Tech. Support Supervisor



BUT I'M JUST EXCITED!!!

New equipment arrives at Fleet on regular basis and, as to be expected, the equipment operators are excited to look it over.

Usually this is not a problem, but operators must remember to look but not touch. When new equipment is delivered to Fleet Management, it must first be inspected and "prepped" by Fleet staff before delivery to the department operators.

Some of the time, the equipment is not immediately

ready to be operated or moved because safety items have not been turned on, oil levels have not been checked, the air conditioning is not hooked up, cutting blades are not tight, and drive shafts are not connected at both ends. These items are done during fleet's initial inspection.

Because of safety concerns to personnel and possible damage to the new equipment, all operators or department personnel will need to check in with the Shop Superintendent prior to starting or "trying out" any new equipment not yet released to them. Never start up a new piece of equipment that has not been released.



MOST OFTEN RECALLED CARS OF 2007

1. Volkswagen Beetle
2. Toyota Tundra & Sequoia
3. Jeep Liberty
4. Nissan Altima
5. Hyundai Tucson
6. Jeep Wrangler & Dodge Nitro
7. Suzuki Forenza & Reno
8. Volkswagen Passat & Passat Wagon
9. Lexus ES 350
10. Chrysler Sebring



PAT LYNCH WINS GOLD MEDAL IN 10K RUN

Fleet's own Patrick (Pat) Lynch, our infield service mechanic, won a gold medal in the 55 - 59 year old division of the Fort Myers River Run on Saturday, December 3, 2007.

The 10K (6.2 mile) race was put on by Fort Myers Track Club and State Seniors Game.

WAY TO GO PAT!!

LITTLE KNOWN USES FOR WD40

- 1) Removes road tar from vehicles.
- 2) Keeps flies off cows.
- 3) Restores and cleans chalkboards.
- 4) Loosens stubborn zippers.
- 5) Removes stains from stainless steel sinks.
- 6) Removes dirt and grime from the barbecue grill.
- 7) Removes tomato stains from clothing.
- 8) Keeps glass shower doors free of water spots.

- 9) Removes black scuff marks from the kitchen floor!
 - 10) Removes splattered bugs from your car.
 - 11) Gives a children's play gym slide a shine for a super fast slide.
 - 12) Keeps bathroom mirror from fogging.
 - 13) Keeps pigeons off the balcony (they hate the smell).
 - 14) Removes all traces of duct tape.
 - 15) Removes love bugs from grills and bumpers.
 - 16) Attracts fish. Spray a LITTLE on live bait or lures.
 - 17) Stops the itch of fire ant bites.
 - 18) Removes crayon from walls.
- P. S. The basic ingredient is FISH OIL. The WD in WD-40 stands for Water Displacer.