






**CPA2007-04  
SMALL SCALE  
COMPREHENSIVE  
PLAN AMENDMENT**

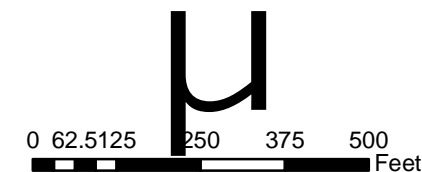
**MANGO/ROWSHAN  
PROPERTIES**

**Proposed  
Future Land Use Map**

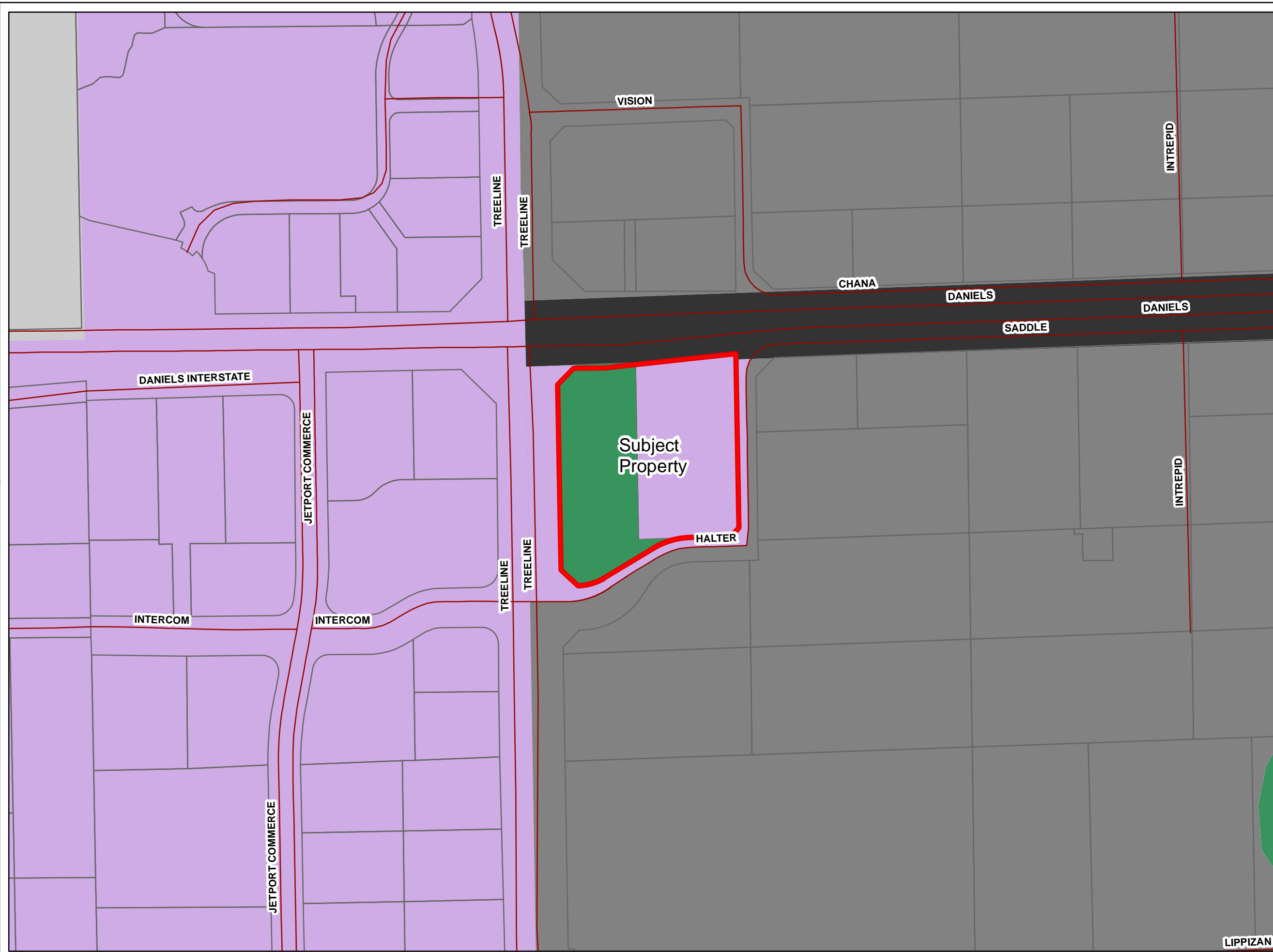
 Subject Property

**FUTURE URBAN AREAS**

-  Public Facilities
-  General Interchange
-  Tradeport
-  Airport
-  Wetlands



Map Generated: January 2009



LIPPIZAN