





# Lee County DOT SMOC

## Asset Inventories

- Signs: 94,000 60,000 Maintained Annually
- Intersection Markings: 13,000 2,400 Maintained Annually
- Long Line Markings: 1,400 miles All Scheduled Annually

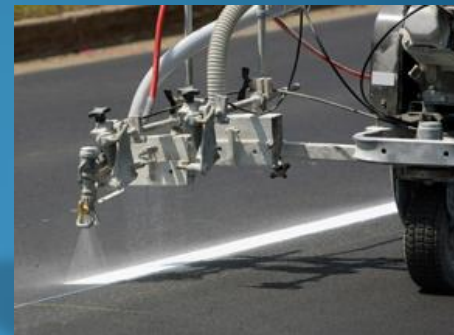
All asset inventories are managed with respect to material life expectancy, based on data from known Lee County asset installations. Inventory items are systematically inspected by qualified personnel with retroreflectometers for signs and pavement markings.



# Lee County DOT SMOC

## Devices which utilize retroreflectivity

Signs, Paint Markings, Thermoplastic Markings,  
Cones, and Barricades.





# Lee County DOT SMOC

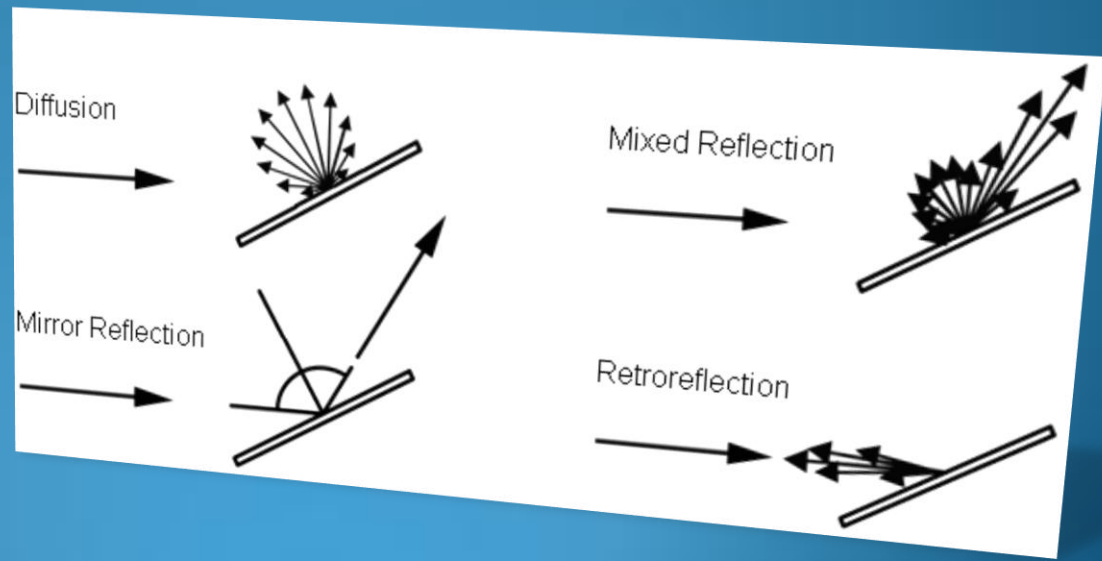
## Preventative Material Replacement

Maintaining the retro-reflectivity of traffic control devices to provide increased night time visibility and safer driving conditions for the residents and tourists of Lee County.



## Retroreflectivity

Defined by the 2009 edition of the MUTCD:  
A property of a surface that allows a large portion of the light coming from a point source to be returned directly back to a point near its origin.

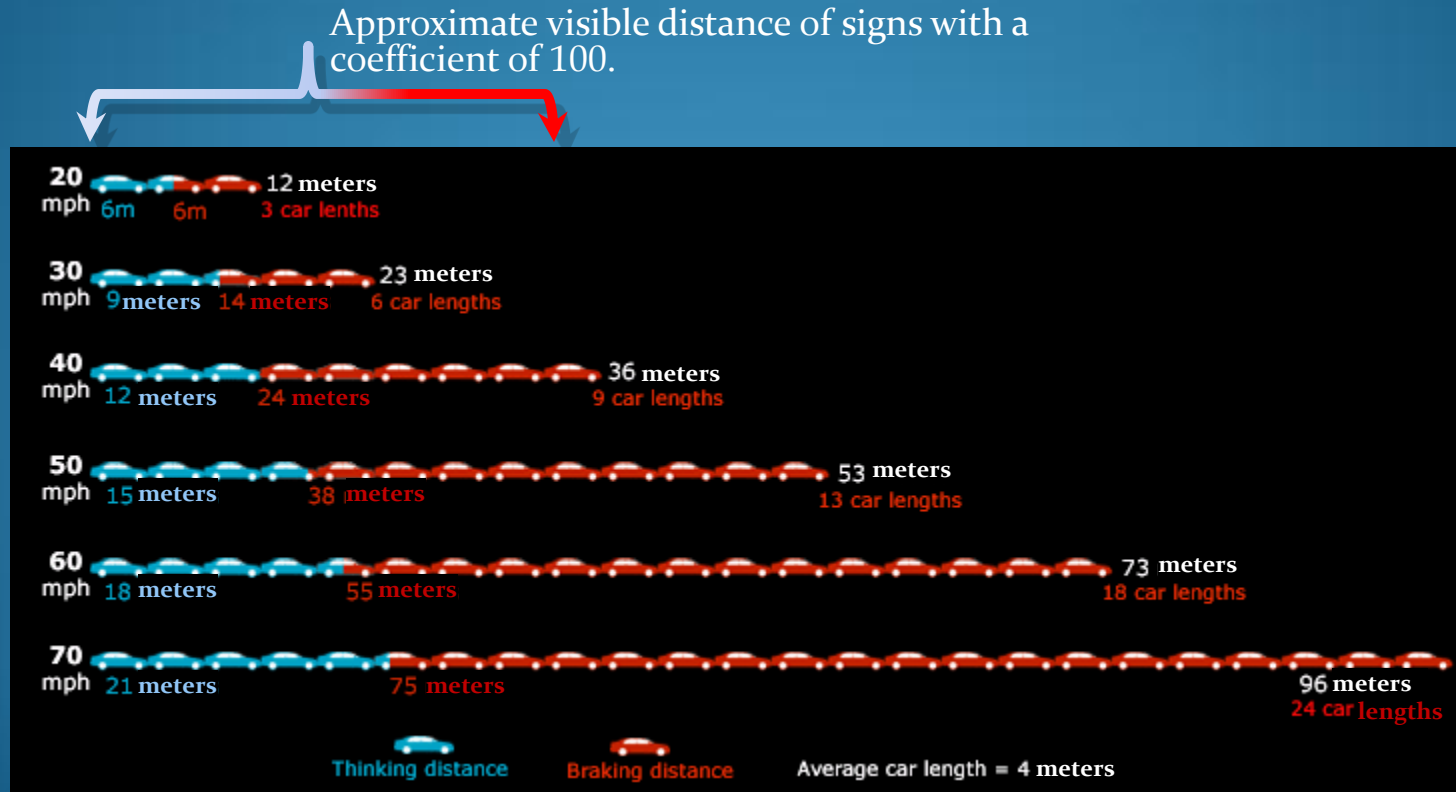




# Lee County DOT SMOG

## Why is it important?

Because when you need to stop, every second counts.





# Lee County DOT SMOC



Typical result from overlay sign fabrication.  
Degradation eventually causes a contrast reversal.

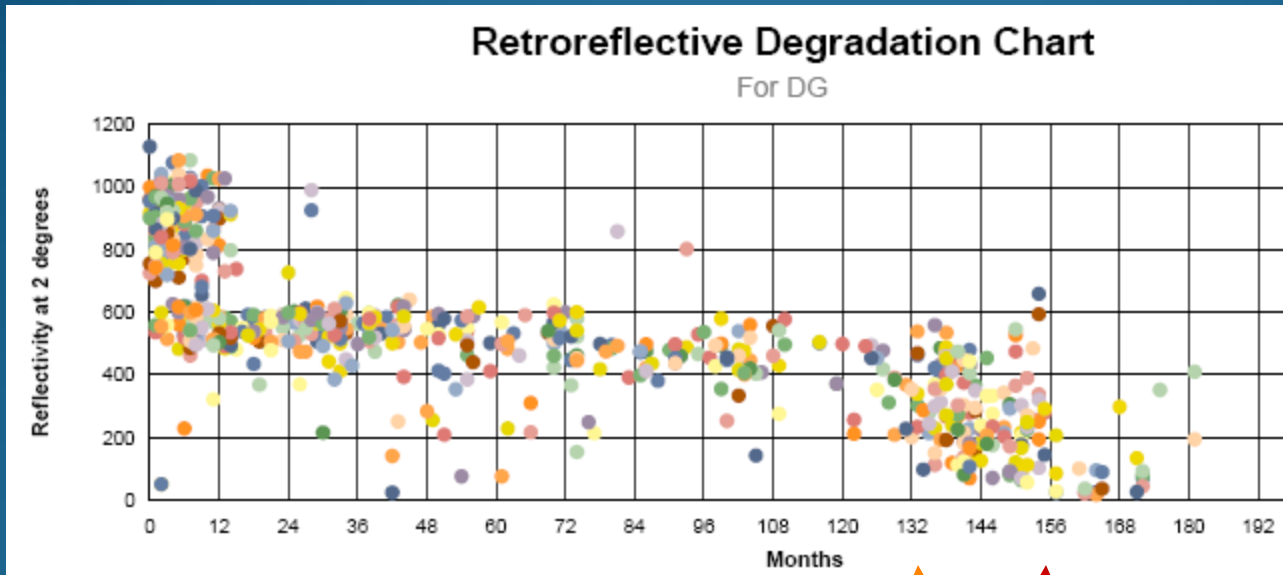
Material assets used beyond their night time effectiveness presents a danger to drivers.

Assets that are well maintained deliver a clear message to the driver and improve safety on the road.



# Lee County DOT SMOC

## Sign Sheeting Data



Tipping point  
based on  
performance

Tipping point  
based on  
time

Intervention:  
Asset Replacement

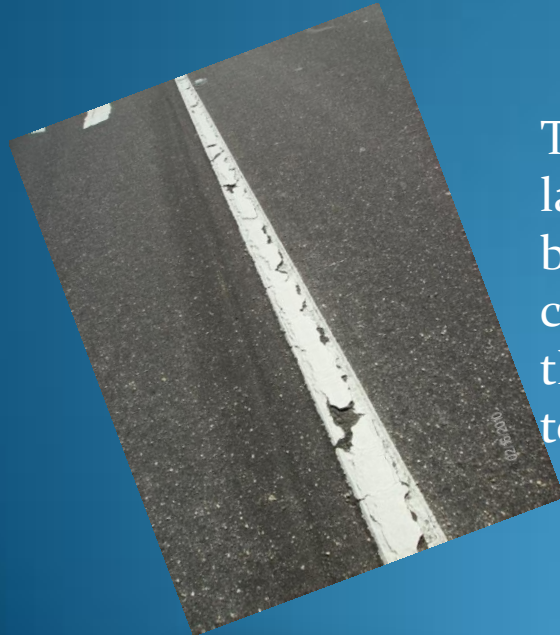
Trend



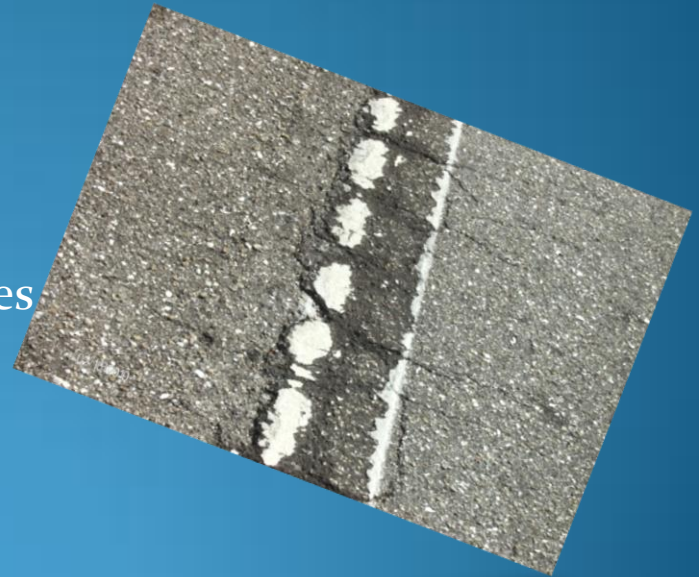
# Lee County DOT SMOG

## Pavement Marking Materials

Paint markings tend to fade evenly, but may not last much longer than a year.



Thermoplastic markings last as much as four years, but the propensity of cracking and flaking makes their degradation difficult to predict.

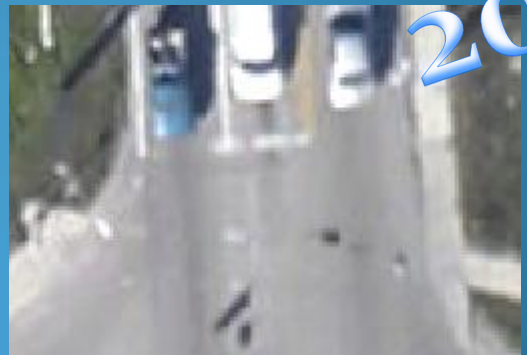
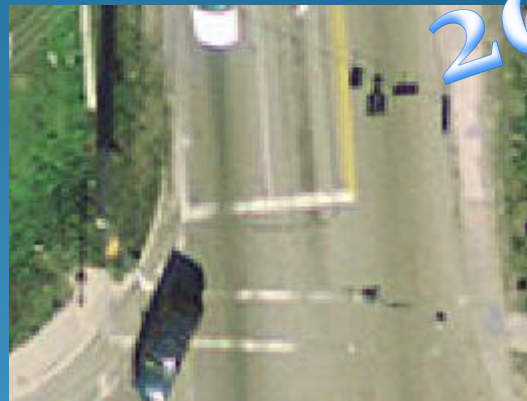
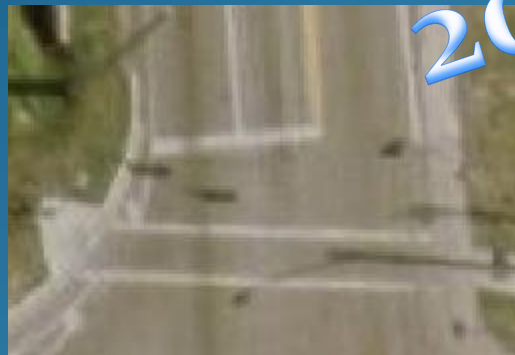




# Lee County DOT SMOC

## Nothing Lasts Forever

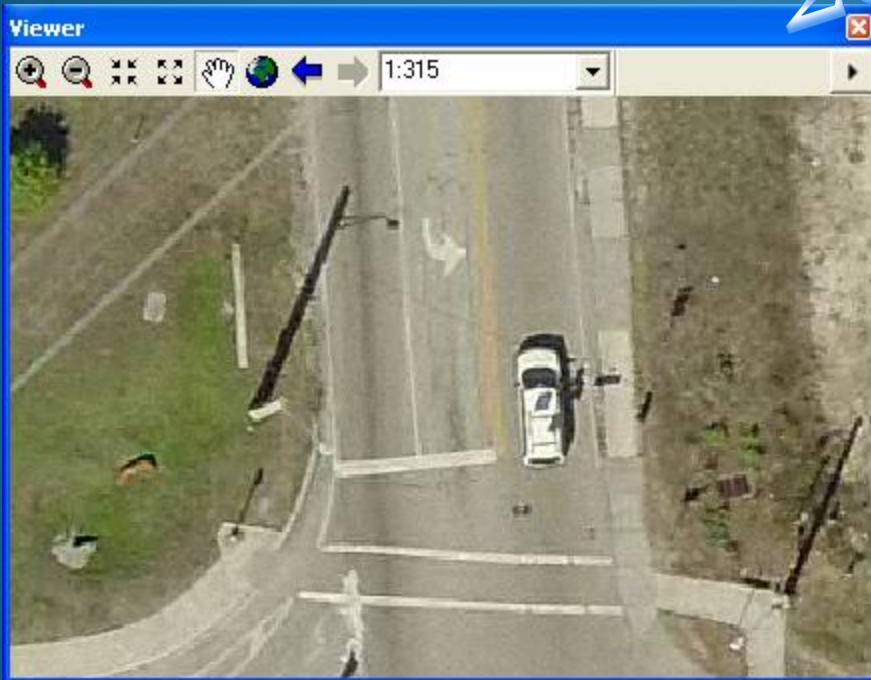
Degradation happens over time.  
If you're not ahead of it, then  
you're behind.





# Lee County DOT SMOC

2011



Today the pavement markings are refreshed. The crosswalk appropriately stretches, unbroken, to both sides of the road. The stop bar is present for both straight and turn lanes.

Asset data management helps to prevent this type of problem before it impacts the citizens.